



DAS HERZ DER FRISCHE

VISITOR INFORMATION FOR THE HAILFINGEN SITE

VISITOR INFORMATION

WELCOME

We are delighted to welcome you to the Hailfingen site. This flyer provides you with some useful information which will help you and us to make your visit as pleasant and, more importantly, as safe as possible. If you have any questions, please talk to your contact person, who will be glad to help you.

EMERGENCY

In the unlikely event of an emergency, the main thing is to keep calm. You can use the following telephone numbers to request prompt assistance internally at any time.

FIRE BRIGADE: 0 74 57-112

AMBULANCE: 0 74 57-1 92 22

POLICE: 0 74 57-110

WELCOME TO BITZER



BITZER Kühlmaschinenbau GmbH

Plant Hailfingen

Etwiesenstraße 42 - 44

72108 Rottenburg-Hailfingen // Germany

Tel +49 (0)70 31 932-0 // Fax +49 (0)74 57 57 84

bitzer@bitzer.de // www.bitzer.de

Subject to change // 80003902 // 04.2019

AF-102-3 EN

YOUR SAFETY IS IMPORTANT TO US

BITZER ID: All visitors must wear a **visitor ID** clearly displayed at all times while on company grounds. Our reception staff will provide you with visitor IDs when you enter the building. Please **return** your visitor ID there at the end of your visit.

Taking photos and filming are strictly prohibited on company premises. If it is necessary to take photos, you must obtain prior permission.

Please pay attention to prohibition signs!

Smoking and consuming alcoholic drinks or any form of drugs are strictly prohibited on the premises. Smoking is only permitted in the smoking shelters at the locations marked on the map.

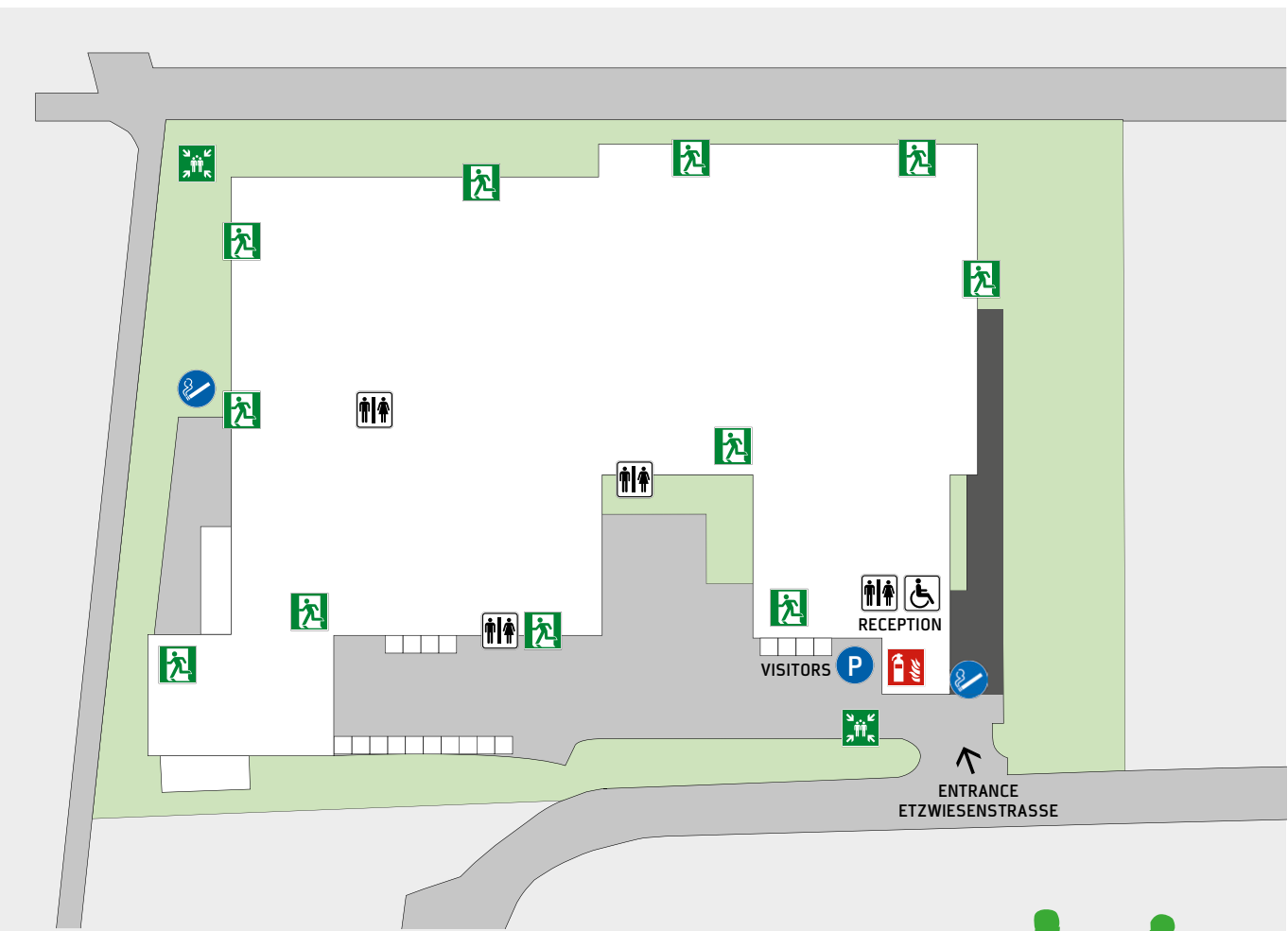
Sturdy shoes are required on the premises. Visitors may only walk along **designated and marked walkways** and only when accompanied by their BITZER contact person. **Safety shoes** are required in production areas (beyond walkways).

Additional personal protection equipment is to be worn as required by hazard levels. The designated BITZER contact person will provide the visitor with information and instructions.

When using traffic routes, please pay attention to the **movement of forklifts and self-driving transport systems**. Do not stand under **suspended loads**. **No unauthorised use of machines or equipment is permitted**. Please pay attention to warning signs!

German road traffic regulations apply on company premises. The **maximum speed** throughout the company premises is **ten kilometres per hour**. Parking is only permitted in the **car parks indicated**. The **'No stopping or parking' signs** must be strictly observed.

All buildings are fitted with **fire alarm systems**. In the event of fire, please remain calm. The first thing you should do is report the fire to the **fire brigade on 0 74 57-112**. Then warn others and bring yourself and other persons in danger **to safety along the marked escape routes**. If the situation allows for it, **try to extinguish the fire** using the fire extinguishers provided. After leaving the building, go to the **assembly points**.



- EMERGENCY EXIT
- ASSEMBLY POINT
- SMOKING SHELTER
- CAR PARK
- WC
- ACCESSIBLE WC
- FIRE EXTINGUISHER

